

Name: _____ ()

Class: Primary 3 _____

Primary 3
Semestral Assessment 1 – 2017
SCIENCE
BOOKLET A
9 May 2017

Total Time for Booklets A and B: 1 hour 15 minutes

15 questions
30 marks

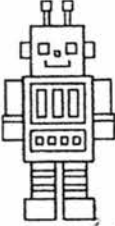



Do not open this booklet until you are told to do so.
Follow all instructions carefully.
Answer all questions.

This booklet consists of 11 printed pages.

Section A (15 x 2 marks = 30 marks)

For each question from 1 to 30, four options are given. One of them is the correct answer. Make your choice (1, 2, 3 or 4). **Shade the correct oval (1, 2, 3 or 4) on the Optical Answer Sheet provided.**

1. Study the table below.

Group X		Group Y	
			
robot	dog	mushroom	chilli plant

Based on the objects given above, which one of the following headings best represents group X and group Y?

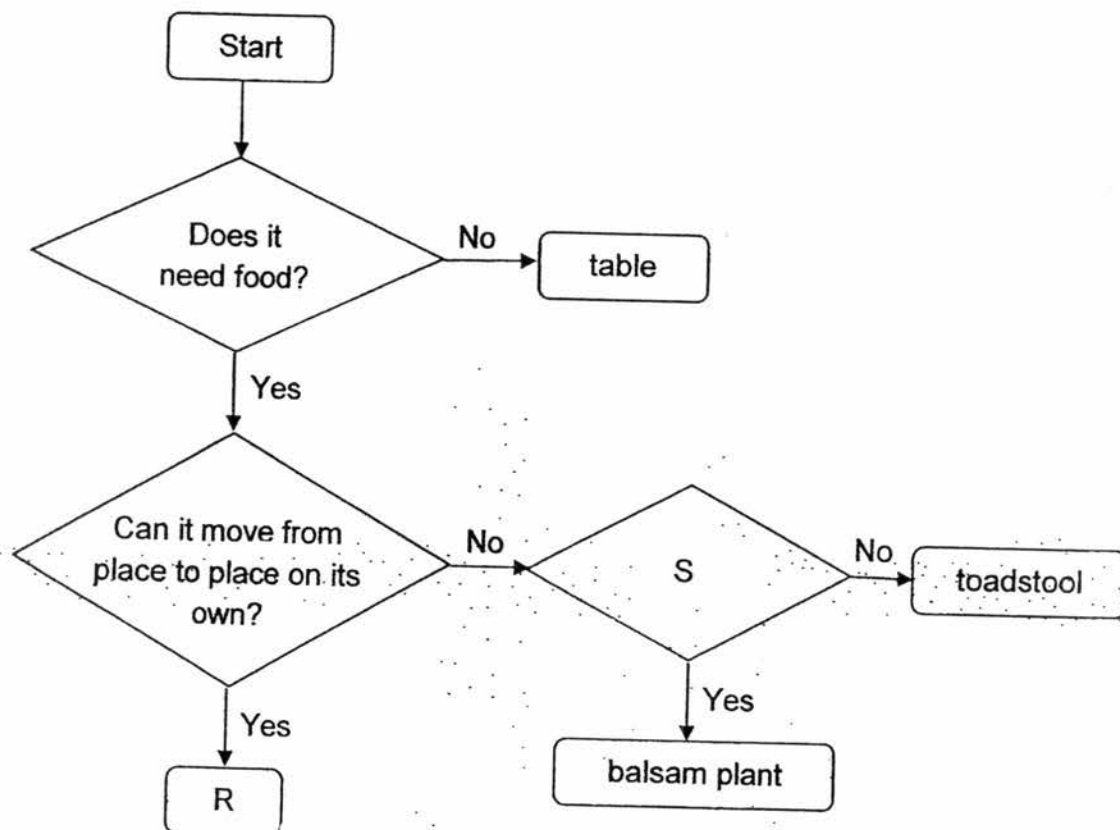
	Group X	Group Y
(1)	has legs	has no legs
(2)	cannot grow	can grow
(3)	can respond to changes	cannot respond to changes
(4)	does not need air, food and water	needs air, food and water

2. Which of the following characteristics are found in birds?

- A They have wings.
- B They have beaks.
- C They breathe through gills.
- D They have feathers on their bodies.

- (1) A and C only
- (2) B and D only
- (3) A, B and D only
- (4) A, C and D only

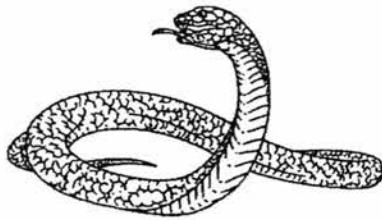
3. Study the chart below.



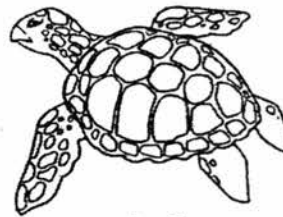
Which one of the following best represents R and S?

	R	S
(1)	Fungi	Does it produce flowers?
(2)	Bacteria	Does it produce spores?
(3)	Coconut tree	Does it produce spores?
(4)	Chicken	Does it produce flowers?

4. The diagram below shows two animals.



snake



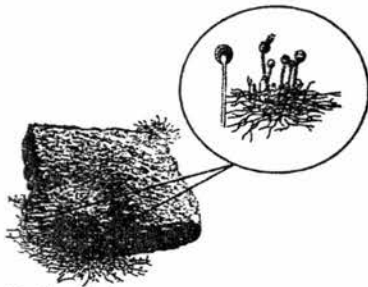
turtle

Which of the following statements show the common characteristics of both animals?

- A They breathe through lungs.
- B They reproduce by laying eggs.
- C They feed their young with milk.
- D They have an outer body covering of scales.

- (1) A and B only
- (2) C and D only
- (3) A, B and D only
- (4) A, B, C and D

5. The diagram below shows four organisms.



A: bread mould



B: bird's nest fern



C: hibiscus plant



D: toadstool

Which of the above organisms do not make their own food?

- (1) A and B only
 - (2) A and D only
 - (3) B and C only
 - (4) C and D only
6. Jessica noticed animal T near a pond. She recorded her observations of animal T as shown in the box below.

It has a tail.

It has four legs.

It has moist skin.

It can find its food on land.

Based on the description above, which one of the following best represents animal T?

- (1) Guppy
- (2) Snake
- (3) Lizard
- (4) Salamander

7. The animals in the table below have been grouped according to similar characteristics.

X	Y	Z
Goldfish Shark Swordfish	Ostrich Parrot Penguin	Grasshopper Butterfly Spider

Based on the table, which one of the following animals has been grouped **incorrectly**?

- (1) Shark
- (2) Spider
- (3) Ostrich
- (4) Penguin

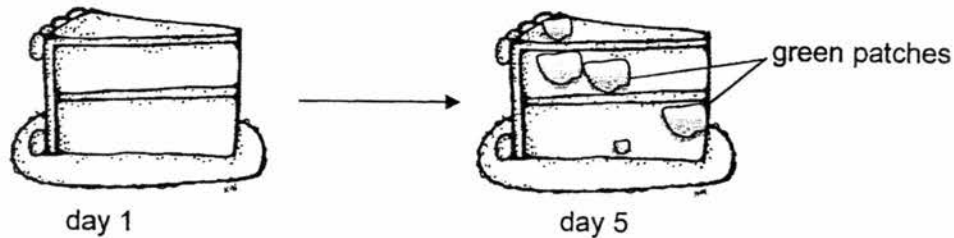
8. Some information on organism X are stated below.

It can reproduce very quickly.
It does not make its own food.
It can be used to make yoghurt.
It is very small and can only be seen under a microscope.

Which one of the following best represents organism X?

- (1) Yeast
- (2) Bacteria
- (3) Bread mould
- (4) Bracket fungi

9. Sally had two similar slices of cake. She placed one slice in the fridge and the other on the kitchen table for five days. After five days, she saw some green patches growing only on the cake that was placed on the table as shown below.



Based on Sally's observation, she can conclude that _____.

- (1) air is needed for mould to grow.
- (2) light is needed for mould to grow.
- (3) food is needed for mould to grow.
- (4) warmth is needed for mould to grow.

10. The diagram below shows plant P.

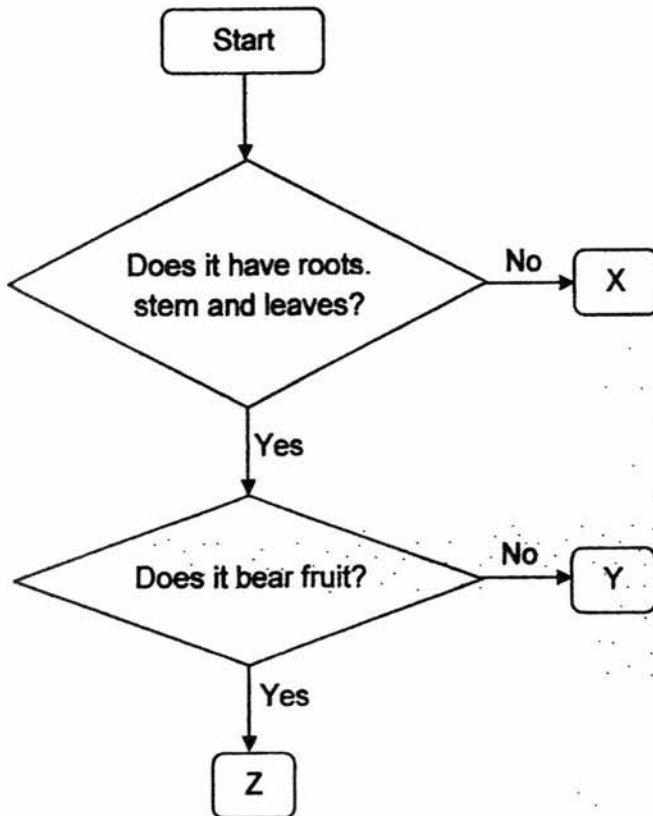


plant P

Based on the diagram above, how can you tell that plant P is a flowering plant?

- (1) It has fruits.
- (2) It reproduces by spores.
- (3) It has leaves to make food.
- (4) It has roots, stem and leaves.

11. Study the chart below.



Which of the following statements best describe X, Y and Z?

- A Z is a flowering plant.
- B Y reproduce from spores.
- C X is a non-flowering plant.
- D Both Y and Z do not depend on others for food.

- (1) A and B only
- (2) C and D only
- (3) A, B and D only
- (4) A, B, C and D

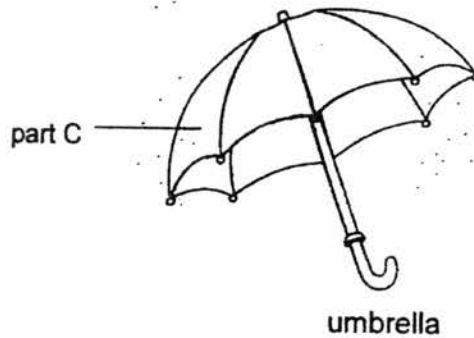
12. Some plants are classified as shown in the table below.

Flowering plants	Non-flowering plants
Banana Balsam Water Lily	Moss Mimosa Stag's horn fern

Which one of the plants has been classified incorrectly?

- (1) Moss
- (2) Balsam
- (3) Mimosa
- (4) Water Lily

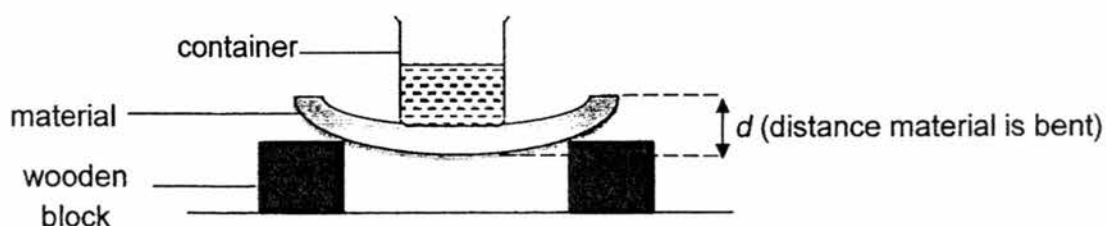
13. Margaret uses the umbrella below to keep out the rain and the sun.



Which one of the following best represents the properties of the material used to make part C?

	Flexible	Waterproof	Allow light to pass through
(1)	Yes	No	Yes
(2)	No	No	Yes
(3)	Yes	Yes	No
(4)	No	Yes	No

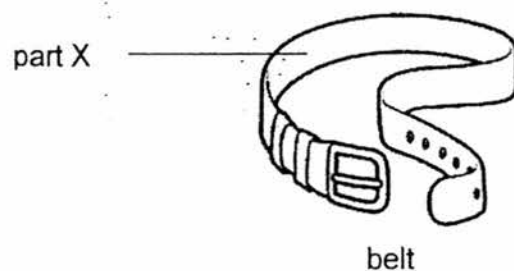
14. An experiment was conducted to compare the flexibility of four different materials P, Q, R and S, which are of the same length and thickness.



For each material, 500g of water was added into the container and the distance (d) was measured. Their results are shown in the table below.

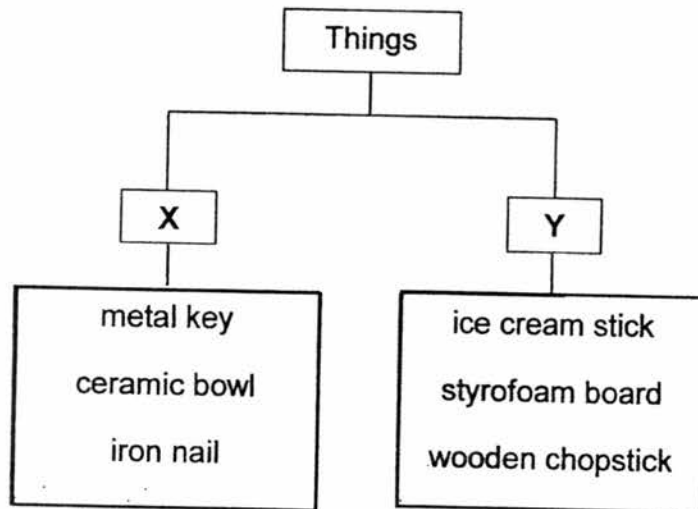
Material	d (Distance material is bent) (mm)
P	48
Q	20
R	10
S	0

Based on the experiment, which material P, Q, R or S, is most suitable for making part X of the belt?



- (1) P
- (2) Q
- (3) R
- (4) S

15. Study the classification chart below.



Which one of the following are suitable headings for group X and Y?

	Group X	Group Y
(1)	flexible	not flexible
(2)	not waterproof	waterproof
(3)	sink in water	float on water.
(4)	allow light to pass through	does not allow light to pass through

End of Section A

Name : _____ ()

Class : Primary 3 _____

Primary 3
Semestral Assessment 1 – 2017

SCIENCE

BOOKLET B

9 May 2017

Total Time for Booklets A and B: 1 hour 15 minutes

7 questions
20 marks

Do not open this booklet until you are told to do so.
Follow all instructions carefully.
Answer all questions.

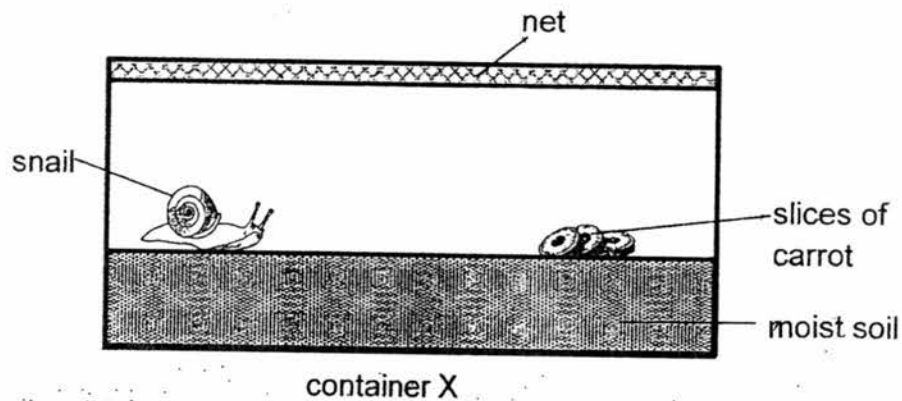
This paper consists of 8 printed pages.

Booklet A	30
Booklet B	20
Total	50

Section B (20 marks)

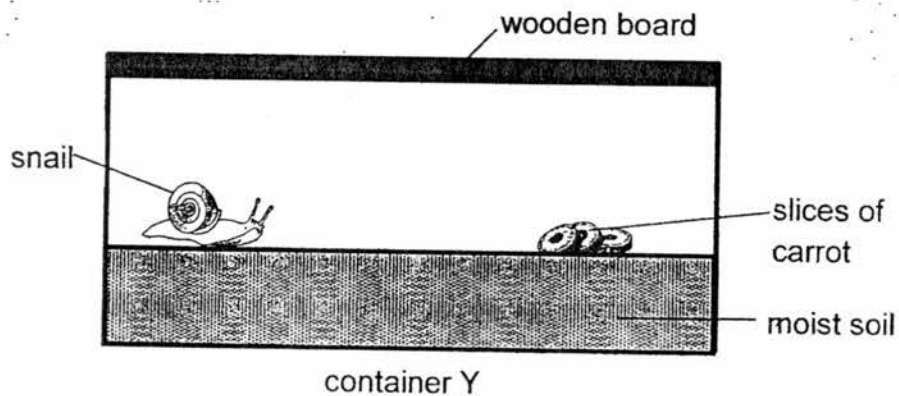
For questions 16 to 22, write your answers in this booklet. The number of marks available is shown in the brackets [] at the end of each question or part question.

16. Tina placed a snail in container X and observed it for a week.



- (a) Give a reason why the snail is able to survive for a week. [1]

Tina then placed the snail in another container, Y, as shown below. A few days later, she noticed that the snail died.



- (b) Explain why the snail died a few days later when it was placed in container Y. [1]

17. The diagram below shows a ladder fern and some mushrooms.



ladder fern



mushrooms

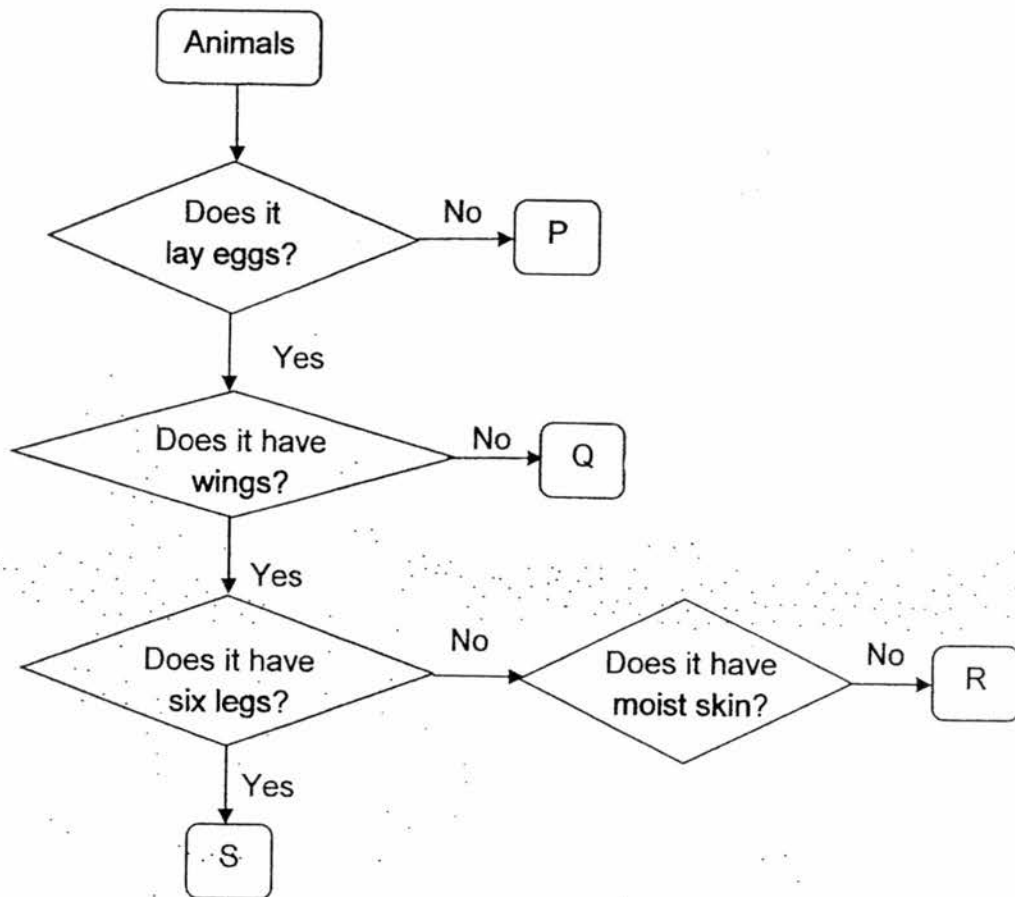
- (a) State one similarity in the reproduction method of the ladder fern and the mushrooms. [1]

- (b) State two differences between the ladder fern and the mushrooms. [2]

Difference 1:

Difference 2:

18. Study the chart below.



(a) Based on the chart above, state one similarity between Q and S. [1]

(b) Based on the chart above, state one difference between S and R. [1]

(c) Based on the chart above, match the animals below with the correct letters P, Q, R or S, in the blanks provided. [2]

Chicken: _____

Fish: _____

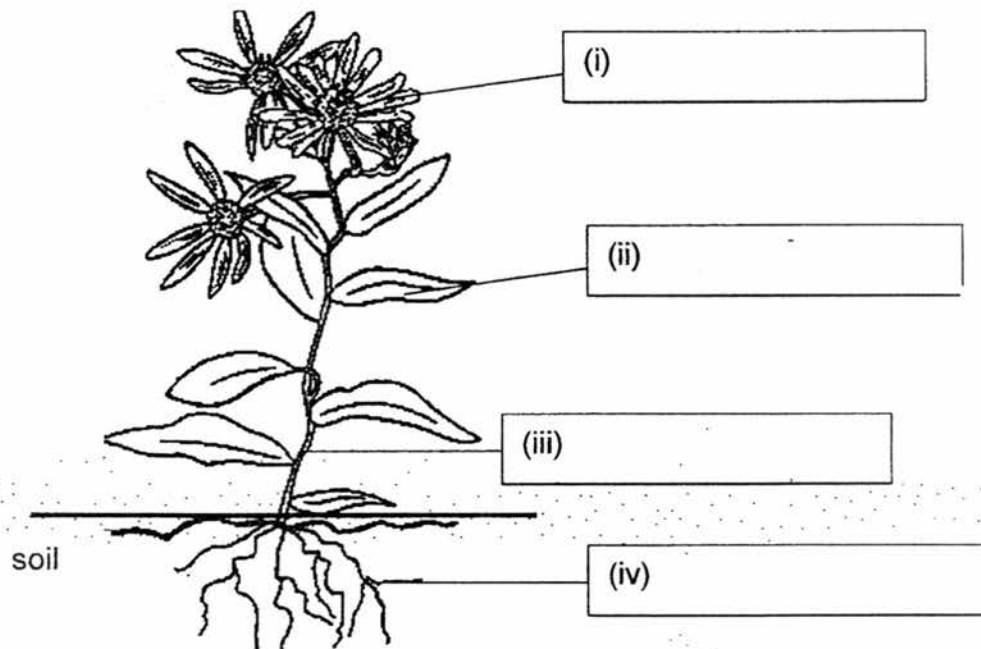
Beetle: _____

Orang-utan: _____

19. The diagram below shows a plant.

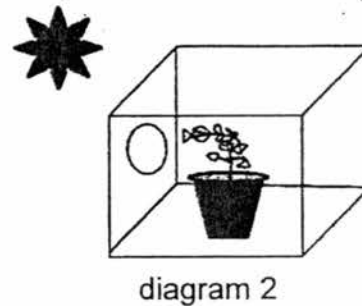
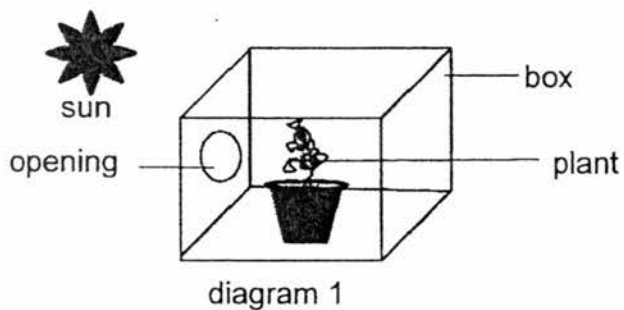
(a) Label the parts of the plant by writing in the boxes provided.

[2]



The plant above is placed in a wooden box with an opening and left in the field as shown in diagram 1.

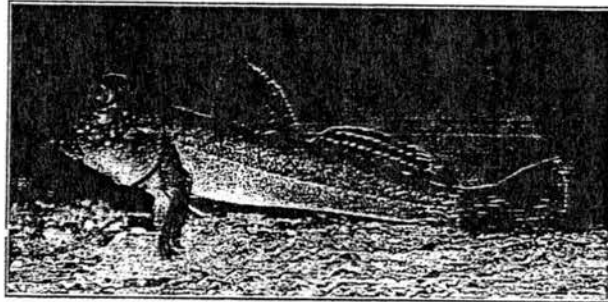
After five days, the plant in the box is seen to be growing towards the opening as shown in diagram 2.



(b) State one characteristic of living things that is shown by the plant.

[1]

20. Mudskippers are special animals. They live mainly in water but are able to survive on land for short periods of time. However, mudskippers are not classified as amphibians.



mudskipper

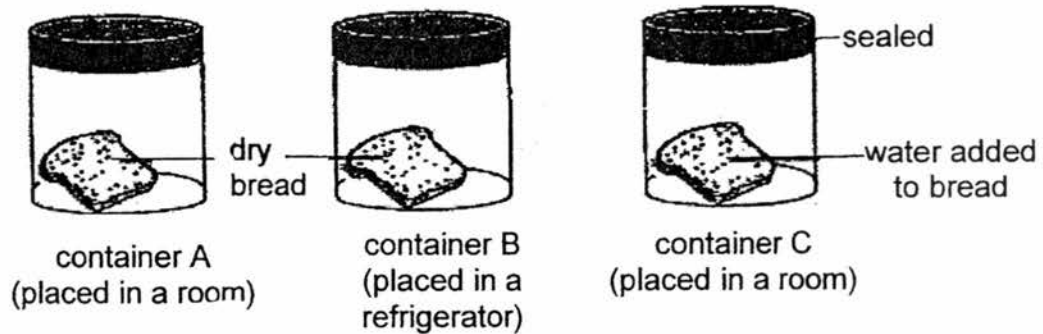
- (a) Which animal group do you think the mudskipper belongs to? [1]

- (b) Give two reasons to support your answer in (a). [1]

Reason 1:

Reason 2:

21. The diagram below shows three sealed containers A, B and C, with a piece of bread each.



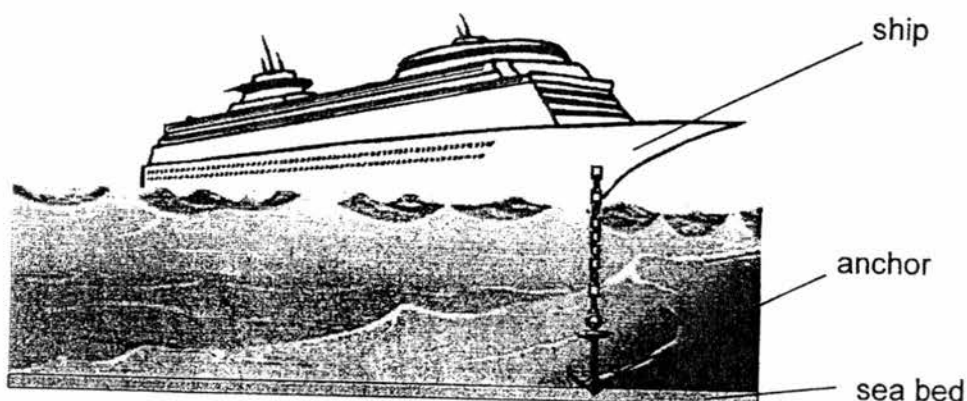
- (a) In the spaces provided below, arrange the letters A, B and C, starting from the bread that grow mould the slowest to the bread that will grow mould the fastest. [1]

_____, _____, _____
(slowest) (fastest)

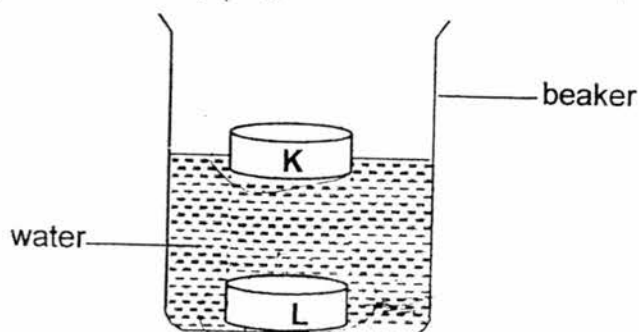
- (b) Based on your answer in (a), name the condition that most likely caused the mould to grow the fastest. [1]

- (c) Which group of living things do bread mould belong to? [1]

22. The picture below shows a ship with its anchor thrown into the sea. The anchor holds the ship and prevent it from moving on its own.



Alex placed two objects K and L, made of different materials, into a beaker of water as shown below.



- (a) Based on the diagram shown above, which material K or L, would be suitable for making the anchor? Give a reason for your answer. [2]

- (b) Based on the diagram shown above, name one object that material K is suitable for making. [1]

End of Booklet B

ANSWER KEY

YEAR : 2017
 LEVEL : PRIMARY 3
 SCHOOL : CHIJ ST NICHOLAS GIRLS'
 SUBJECT : SCIENCE
 TERM : SA1

Booklet A

Q1	Q2	Q3	Q4	Q5	Q6	Q7	Q8
1	3	4	3	2	4	2	2
Q9	Q10	Q11	Q12	Q13	Q14	Q15	
4	1	3	3	3	1	3	

Booklet B

16	(a)	Living things like animals need air, food and water to survive.
	(b)	There was little air for the snail.
17	(a)	They both reproduce by spores.
	(b)	The ladder fern can make its own food but the mushroom cannot make its own food.
18	(a)	They both lay eggs.
	(b)	S has six legs but R does not have six legs.
	(c)	Chicken : <u>R</u> Fish : <u>Q</u>
		Beetle : <u>S</u> Orang-utan: <u>P</u>
19	(a)	(i) flowers (ii) leaf (iii) stem (iv) root
	(b)	Living thing can respond to changes in their environment.

20	(a)	It belongs to fish.
	(b)	Reason 1: It has fins to swim. Reason 2: It has scales.
21	(a)	B, A, C
	(b)	Moisture helps mould to grow faster.
	(c)	It belongs to fungi.
22	(a)	Material L. It can sink and prevent the ship from moving its own.
	(b)	Material K can make a float.

End